

DM-LX4

Safety & Operators Manual



2024-07-29

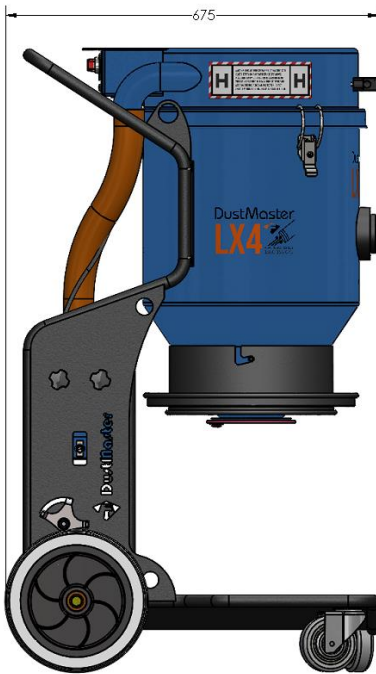
Table of Contents

Contents

Table of Contents	1
Specifications.....	2
Safety Instructions	3
Filter Cleaning	4
Filter Cleaning	5
Motor Pods.....	6
Motor Pods.....	7
Operating Instructions.....	8
Electrical Safety.....	9
Problem Solving	10
Parts list - Main	11
Parts List – Chassis Complete.....	12
Parts List - Main Bowl	13
Parts List - Head	14
Parts List - Motor Pod	15
Hazardous Substance Warning.....	16
Wiring Diagram	17

Specifications

Model	DM-LX4
Voltage	230 VAC 50/60HZ
Amps - 1 Motor	5A
Amps - 2 Motor	10A
Length Width Height	675mm x 510mm x 1124mm
Weight - 1 Motor	60kg
Weight - 2 Motor	62kg



Safety Instructions

1. Read and understand the instructions on the Dust Extractor and in this manual. Different models may have different parts and controls.
2. Equipment should only be operated by trained personnel, in good physical condition and mental health (not fatigued).
3. This equipment is intended for commercial use.
4. This equipment could produce sound pressure levels greater than 85db. The operator must wear approved safety ear protection.
5. For the operators' safety and the safety of others, always keep all guards and shrouds in place.
6. This the Dust Extractor is intended for use with concrete dust.
7. Do not lend or rent the Dust Extractor without the operating instructions for the Dust Extractor.
8. Wear clothing suitable for the job and for the work place including, safety shoes, hard hat, hearing protection, non-fogging vented safety goggles, and dust mask suitable respirator mask as required.
9. Keep body parts or any loose clothing away from moving parts. Failure to comply could result in bodily injury.
10. Do not modify the Dust Extractor in any way. Only use genuine DustMaster parts and accessories.
11. Repairs should be performed by qualified persons only.
12. Never operate or store the Dust Extractor in rain or if heavy moisture is present.
13. **WARNING!** Breathable silica may be generated by use and maintenance of this the Dust Extractor. Silica can cause severe and permanent lung damage, cancer, and or other serious diseases. Do not breathe the dust. Do not rely on your sight or smell to determine if dust is in the air. Silica may be in the air without a visible dust cloud. If air monitoring for silica is not provided by your employer at your work site, you must wear appropriate respiratory protection

when operating or maintaining this equipment. Consult your employer for proper respiratory protection.

Filter Cleaning

14. The Dust Extractor has a filter cleaning system that operates when the filter cleaning knob is activated.
15. The Filter Indicator indicates if the filter is blocked or not. When the gauge reaches the yellow section, -0.05 to -0.18 bar, the filters are blocked and require cleaning.
16. After cleaning the filter using the procedure below, if the Filter indicator still reads in the yellow with both motors on and no hose, then replace the filter and install a new filter cleaning kit supplied.
17. On H Class models, the secondary filter is not cleanable and once it is blocked it will need to be safely disposed of in a sealed plastic bag.
18. **Warning!** – use safety approved respirator mask when servicing and maintaining this machine.
19. In normal operation, the filters will be sufficiently cleaned without the need for any manual filter cleaning such as washing the pleats directly.
20. Do not use compressed air to clean any filter as it can damage the media and allow dust to enter the motor.
21. The filter cleaning mechanism can be left on during vacuum operation. This may negatively impact the life of the filter cleaning mechanism.

Filter Cleaning

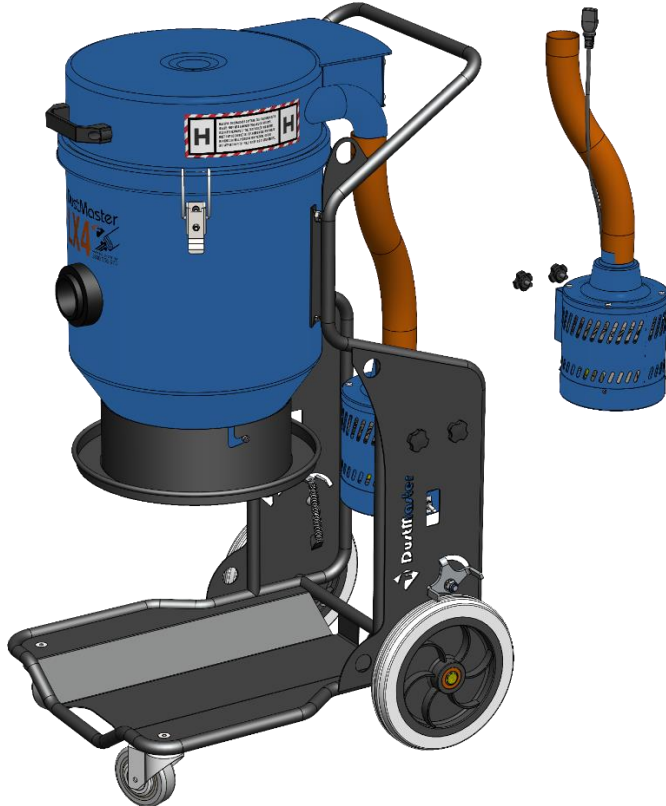


22. To clean the filter;
 - a. Switch both vacuum motors off
 - b. Switch on the filter cleaning system (turn clockwise).
 - c. Run for a minimum of 30 seconds.

23. There is no problem running for longer as required.

Motor Pods

24. The DustMaster LX4 has the ability to accept up to two Motor Pods.



25. This system allows the user to;
- Purchase a single motor unit later and upgrade to two motor unit on with ease.
 - Continue working with one Motor Pod while the other is being serviced
 - Send the Motor Pod for service without transporting the whole machine.

Motor Pods

26. To remove a Motor Pod;
 - a. Disconnect power to the machine.
 - b. Disconnect the motor power cord from the bottom of the control panel
 - c. Disconnect the connecting hose at the top by pulling firmly downwards
 - d. While supporting the Motor Pod with one hand, loosen the two fasteners holding the motor on.
 - e. Carefully maneuver the Motor Pod from the DustMaster LX4.
 - f. If you are leaving the motor off and running only with one motor, use the cap provided to blank off the additional port on the top cap.
27. To Install an additional Motor Pod, disconnect the power from the machine and follow the above procedure in reverse.
28. Note: This system is protected by Patent Application 2024901273

Operating Instructions

29. Wear clothes suitable for the job and for the work place including, safety shoes, hard hat, hearing protection, non-fogging vented safety goggles, and dust respirator suitable for dust.
30. Be sure all equipment is tested and tagged prior to use on any job.
31. Connect hose to the dust extractor via standard 50mm Hose cuffs. It is recommended a maximum of 20m for 50mm and 5m of 38mm
32. Make sure all latches are secure before plugin in the machine.
33. Connect the Dust Extractor to suitable power outlet. This is normally 10A. If you need to connect using extension cords, use heavy duty leads suitable for 10A high current use. Preferably a maximum of 20 meters of 1.5mm² or 40 meters of 2.5mm²
34. Do not pull via the hose. Pulling the machine via the hose could cause the machine tip over and damage occur to the machine Always move the Dust Extractor with the handle on the front or the main frame handle.
35. Keep the Dust Extractor clear of drainage pits and grates or any such hazard. Failure to comply could result in bodily injury and or could damage the Dust Extractor or property.
36. Do not attempt to make any adjustments while the Dust Extractor is in operation. Any adjustments must only be performed when the Dust Extractor is stopped and power disconnected.
37. Switch the vacuum motors on using the toggle switches located on the motors on each side of the machine.
38. **WARNING!** Breathable silica may be generated by use and maintenance of this the Dust Extractor. Silica can cause severe and permanent lung damage, cancer, and or other serious diseases. Do not breathe the dust. Do not rely on your sight or smell to determine if dust is in the air. Silica may be in the air without a visible dust cloud. If air monitoring for silica is not provided by your employer at your work site, you must wear appropriate respiratory protection when operating or maintaining this equipment. Consult your employer for proper respiratory protection.

Electrical Safety

39. All electrical maintenance and repairs are to be carried out by qualified persons only.
40. CAUTION - Line terminals may be alive when main switch is in the off position. Disconnect all power at source before performing any maintenance or repairs.
41. WARNING - DO NOT operate the Dust Extractor with any electrical panels open.
42. Never operate the Dust Extractor in the rain or if heavy moisture is present.
43. Never bypass over current devices in this the Dust Extractor.
44. Never connect or disconnect power cables with voltage present or while under load.
45. Disconnect all power connections and observe lock out / tag out procedures before attempting to carry out any maintenance or repair on any equipment.
46. Avoid any contact with any rotating parts or driven parts.
47. Never use equipment that has not been tested and tagged.
48. Before connecting the Dust Extractor to power, check the condition of all power leads and cables on, or used in conjunction with the Dust Extractor. DO NOT USE the Dust Extractor if any faults cuts, wear marks, bare wires out of plugs or sockets are identified.
49. Get qualified persons to repair and re-tag it as required by regulations in your country.
50. Connect the Dust Extractor to suitable power outlet. This is normally 10A. If you need to connect using extension cords, use heavy duty leads suitable for 10A high current use. Preferably a maximum of 20 meters of 1.5mm² or 40 meters of 2.5mm²
51. The Dust Extractor can produce sound pressure levels greater than 85db. The operator must wear approved safety ear protection.

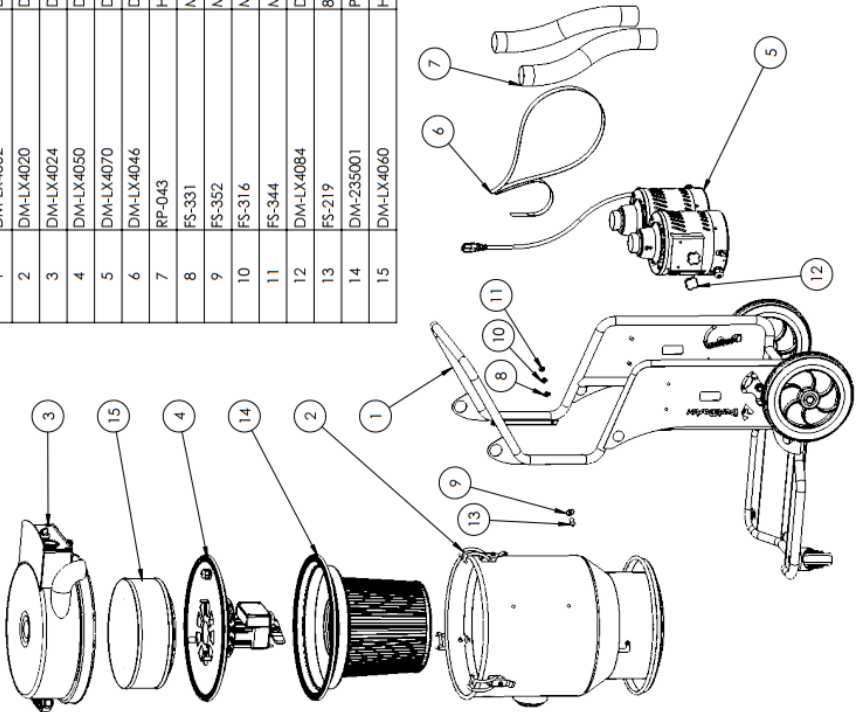
Problem Solving

PROBLEM	CAUSE	REMEDY
The Dust Extractor will not start / run.	No power is present at cable Power Supply.	Check the power is present with another tool.
	The motor is not plugged into the head unit	Plug the motor into the head of the machine
The Dust Extractor is not sucking	The top cap is not fitted correctly	Make sure the top cap is correctly positioned on the main bowl and firmly against the seal.
	The rubber flap is worn out or missing.	Check the check the rubber flap under the machine for wear and replace as necessary
	The filters are blocked.	Check the rotary filter cleaning is not working
	The filter cleaning system not turning or not switched on.	Have Qualified persons check the Dust Extractor system and rectify the problem
	The main bowl is full of dust	Empty the main bowl, check the rubber flap is functioning correctly.

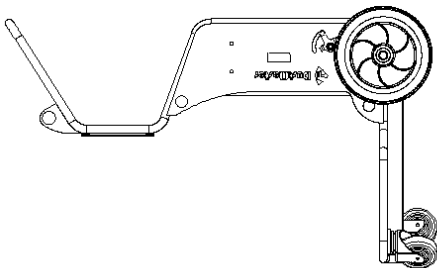
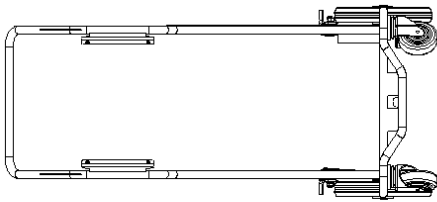
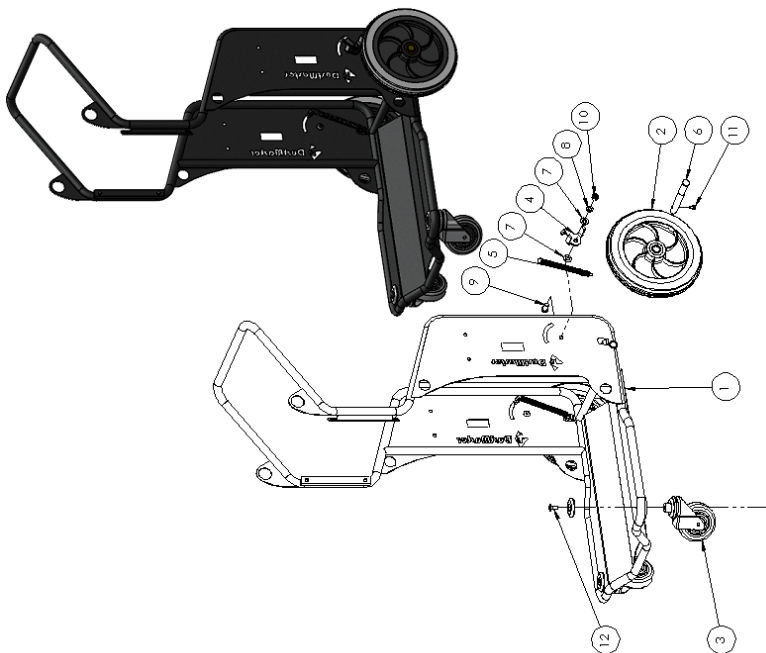
This is a guide only. Consult your supplier for more information

Parts list - Main

ITEM NO.	PartNo	DESCRIPTION	QTY.
1	DM-LX4002	DM-LX4 - Main Chassis Complete	1
2	DM-LX4020	DM-LX4 - Main Cyclone Complete with Catches and LP Tray	1
3	DM-LX4024	DM-LX4 - Top Cap Assembled with Power and Handle	1
4	DM-LX4050	DM-LX4 - Filter Cleaning Module	1
5	DM-LX4070	DM-LX4 - Motor Pod Complete	2
6	DM-LX4046	DM-LX4 - Double Loop hanger Strap	1
7	RP-043	Hose 50mm Urethane Heavy (p/m)	2
8	FS-331	M8 Standard Washer	4
9	FS-352	M8 Penny Washer	4
10	FS-316	M8 Spring Washer	4
11	FS-344	M8 Standard Nut	4
12	DM-LX4084	DM-LX4 - Motor Pod Knob M8	4
13	FS-219	8 X 16 Buffon Head	4
14	DM-235001	PTFE Filler for DM One and Two motor Vacuums	1
15	DM-LX4060	H Class filter element - 306mm x 100mm + Seal	1

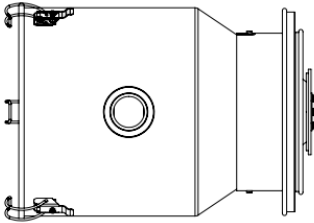
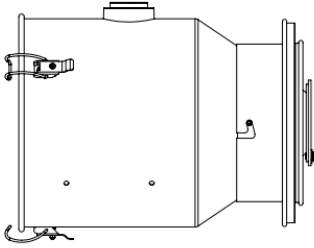


Parts List – Chassis Complete

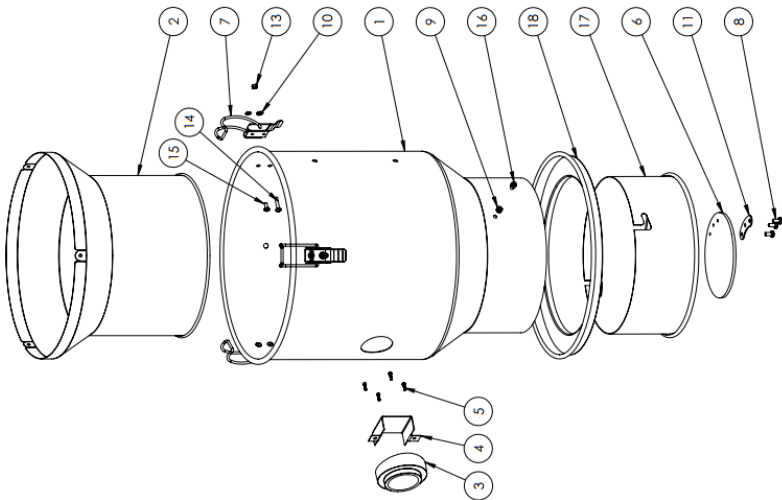


ITEM NO.	PartNo	DESCRIPTION	QTY.
1	DM-LX401 0	DM-LX4 - Main Chassis	1
2	DM-200060	DM Series 254mm Rear Wheel	2
3	DM-LX401 1	DM-LX4 - Front Castor	2
4	DM-LX401 3	DM-LX4 - Brake	2
5	DM-LX401 4	DM-LX4 - Brake Spring	2
6	DM-LX401 6	DM-LX4 - Rear Stub Axle	2
7	FS-322	M10 Standard Washer	4
8	FS-317	M10 Spring Washer	2
9	FS-214	10 X 25 Button Head	2
10	FS-265	M10 Nyloc Nut	2
11	FS-220	M6 X 10 Socket Head Cap Screw	2
12	FS-249	M10 X 25 Socket Head Countersunk Screw	2
13	DM-LX401 2	DM-LX4 - Front Castor/Countersunk Washer	2

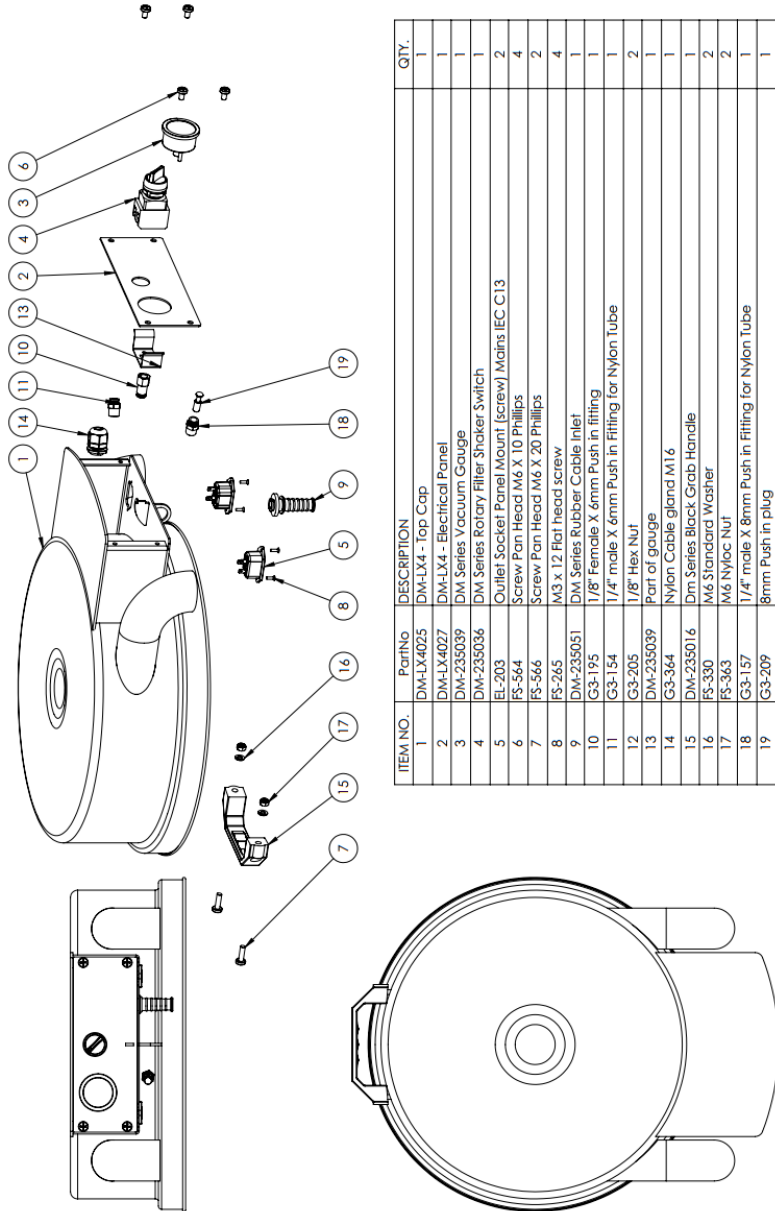
Parts List - Main Bowl



ITEM NO.	PartNo	DESCRIPTION	QTY.
1	DM-LX4030	DM-LX4 - Main Cyclone Bowl	1
2	DM-LX4032	DM-LX4 - Filter Protector	1
3	DM-235028	DM Series 1 & 2 Motor Inlet Black Plastic Connection	1
4	DM-235029	DM Series Inlet Deflector	1
5	FS-531	8G x 1/2" Pan Head Self Tapping Screw	4
6	DM-LX4034	DM-LX4 - Longapac Valve Rubber	1
7	DM-235021	DM Series Latch	3
8	FS-565	Screw Pan Head M6 X 12 Phillips	3
9	FS-363	M6 Nyloc Nut	3
10	FS-330	M6 Standard Washer	3
11	DM-LX4035	DM-LX4 - Longapac Valve Support Plate	1
12	FS-329	M5 Standard Washer	3
13	FS-362	M5 Nyloc Nut	7
14		M5 x .25 Screw Pan Head Phillips	3
15		M5 x 12 Screw Pan Head Phillips	3
16	FS-230	M6 X 10 Socket Head Cap Screw	2
17	DM-27033	Longapac Cassette Holder Collar without Tray	1
18	DM-27034	Longapac Cassette Holder Tray without Collar	1



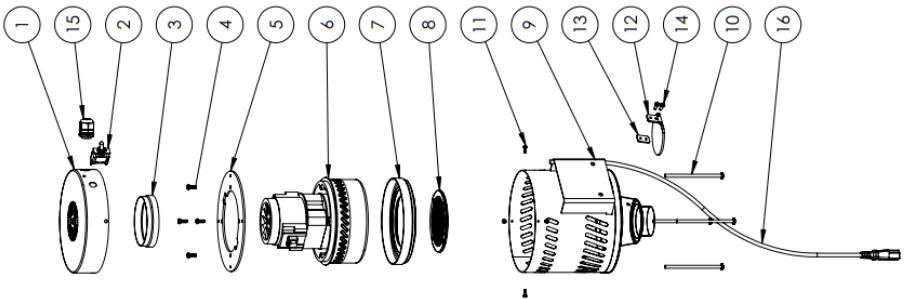
Parts List - Head



ITEM NO.	PartNo	DESCRIPTION	QTY.
1	DM-LX4025	DM-LX4 - Top Cap	1
2	DM-LX4027	DM-LX4 - Electrical Panel	1
3	DM-235039	DM Series Vacuum Gauge	1
4	DM-235036	DM Series Rotary Filter Shaker Switch	1
5	EL-203	Outlet Socket Panel Mount (screw) Mains IEC C13	2
6	FS-564	Screw Pan Head M6 X 10 Phillips	4
7	FS-566	Screw Pan Head M6 X 20 Phillips	2
8	FS-265	M3 x 12 Flat head screw	4
9	DM-235051	DM Series Rubber Cable Inlet	1
10	G3-195	1/8" Female X 6mm Push in fitting	1
11	G3-154	1/4" male X 6mm Push in Fitting for Nylon Tube	1
12	G3-205	1/8" Hex Nut	2
13	DM-235039	Part of gauge	1
14	G3-364	Nylon Cable gland M16	1
15	DM-235016	DM Series Black Grab Handle	1
16	FS-330	M6 Standard Washer	2
17	FS-363	M6 Nylonoc Nut	2
18	G3-157	1/4" male X 8mm Push in Fitting for Nylon Tube	1
19	G3-209	8mm Push in plug	1

Parts List - Motor Pod

ITEM NO.	PartNo	DESCRIPTION	QTY.
1	DM-LX4080	DM-LX4 - Motor Pod Fan End Cap	1
2	DM-235020	DM Series Replacement Toggle Switch	1
3	DM-235056	DM Motor Top Cooling Fan Rubber Seal	1
4	FS-535	10G x 12mm Pan Head Self Tapping Screw	4
5	DM-LX4078	DM-LX4 - Motor Pod Motor Clamp Ring	1
6	DM-235002	DM Series Replacement Motor (Includes Brushes)	1
7	DM-235046	DM Motor bottom rubber seal	1
8	DM-235045	DM Series Motor Gauze	1
9	DM-LX4072	DM-LX4 - Motor Pod Motor Housing	1
10	FS-	M5 x 100 Screw Pan Head Phillips	4
11	FS-530	Ø8G x 3/8"	4
12	DM-LX4085	DM-LX4 - Motor Pod One Way Flap	1
13	DM-LX4086	DM-LX4 - Motor Pod One Way Flap Clamp	1
14	FS-552	M4 X 10 Screw Pan Head Phillips	2
15	G3-364	Nylon Cable gland M16	1
16	DM-LX4-087	Power Lead for LX4 Motor Pod	1

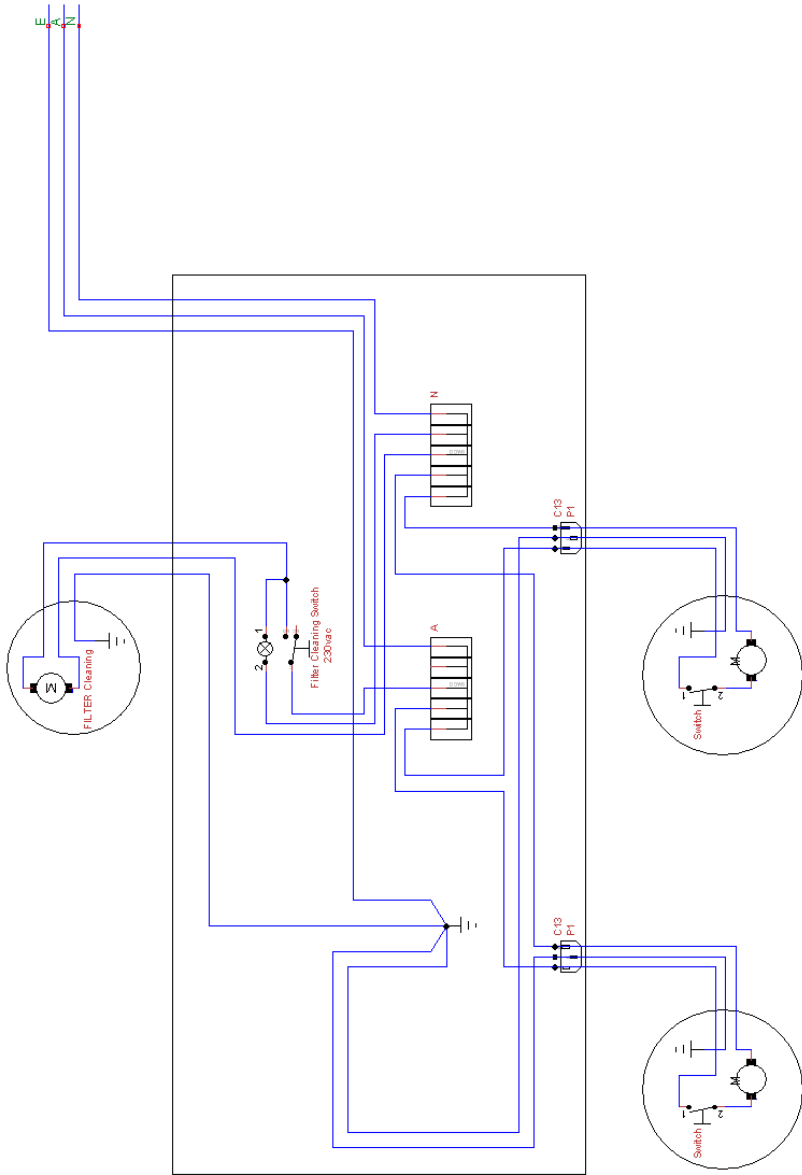


Hazardous Substance Warning



- 52. WARNING: M Class, H Class and HEPA Units could contain hazardous dust.
- 53. Emptying and maintenance, including the removal of the dust bag, may only be carried out by well-informed persons wearing suitable protective PPE and clothing and in controlled environment to protect you and persons around you.
- 54. Do not use the unit after maintenance until the complete filter system has been installed and checked and certified by qualified persons.

Wiring Diagram





Floorex Products

Your complete supplier of all your concrete surface preparation needs

- Diamond grinders
- Dust extraction
- Shotblasters
- Screed mixers
- Diamond Tooling
- Floor Scrapers
- Coating application

Web: www.floorex.com.au

Email: sales@floorex.com.au